

# SlimWinch

下翻门配件

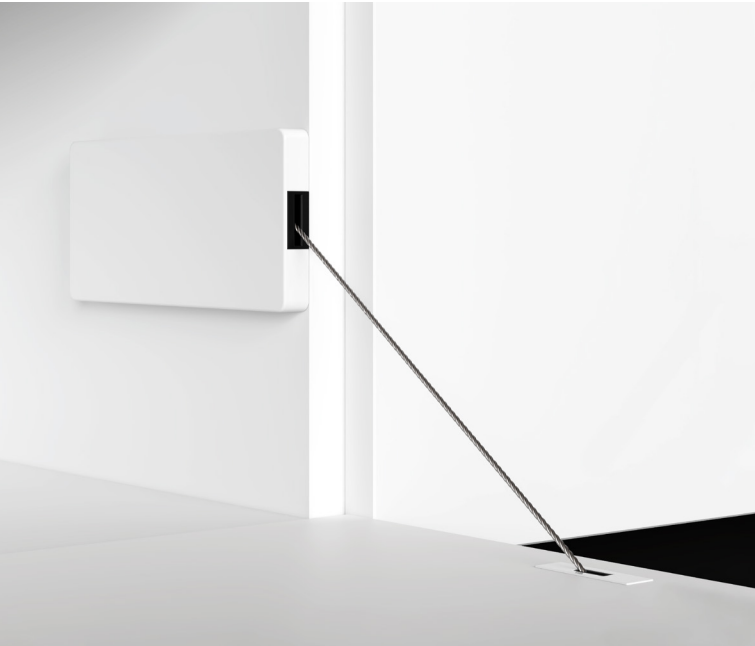
Mechanism for flap doors



# SlimWinch

## 下翻门配件

Mechanism for flap doors



Meccanismo di apertura per ante a ribalta da 18 mm di spessore, ammortizzato in apertura e in chiusura. SlimWinch ha uno spessore di soli 12 mm (13,5 mm con cover).

È disponibile per due tipi di applicazione:

- montaggio esterno con cover
- montaggio incassato con cover a filo

La lunghezza del cavo e la forza della molla sono regolabili. Un meccanismo brevettato annulla il peso dell'anta in fase di chiusura, garantendo all'utente il minimo sforzo.

Materiali: acciaio, zama, tecnopolimero, ABS.

Colori cover: bianco segnale (RAL 9003), grigio seta (RAL 7044), grigio quarzo (RAL 7039), grigio ferro (RAL 7011), marrone grigiastro (RAL 8019), nero traffico (RAL 9017).

Opening mechanism for flap doors from 18 mm thick, amortized opening and closing. SlimWinch is only 12 mm thick (13,5 mm with the cover).

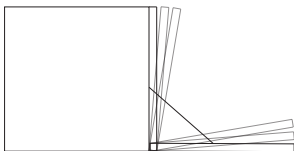
It is available for two types of applications:

- external mounting with cover
- recessed mounting with flush cover

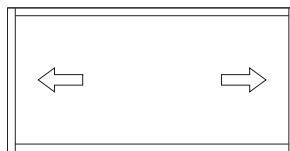
Cable length and spring force are adjustable. A patented mechanism cancels the weight of the door when closing, guaranteeing the user minimum strain.

Materials: steel, zama, technopolymer, ABS.

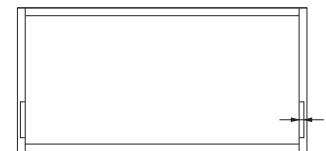
Cover colors: white signal (RAL 9003), silk grey (RAL 7044), quartz grey (RAL 7039), iron grey (RAL 7011) greyish brown (RAL 8019), black traffic (RAL 9017).



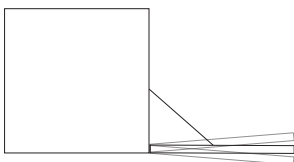
**缓冲开启以及缓冲关闭**  
Soft opening and soft closing



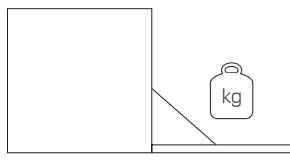
**对称**  
Symmetric



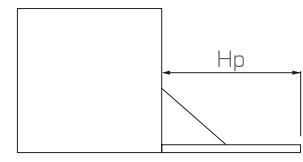
**超薄配件**  
Narrow mechanism's thickness



**开门角度可调**  
Door's opening angle adjustment



**最大门板 14 kg**  
Maximum door's weight 14 kg



**门板高度20至48cm**  
Door's height from 20 to 48 cm

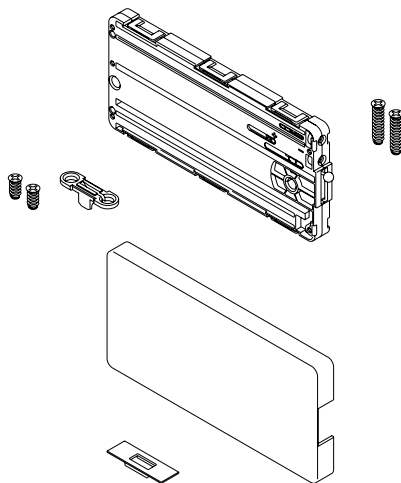
## 包装

### Packaging

1. **Contiene 10 SlimWinch sfusi**  
Contains 10 unpackaged SlimWinch
2. **Contiene 10 SlimWinch confezionati singolarmente**  
Contains 10 packaged SlimWinch
3. **Contiene 10 Cover per SlimWinch (montaggio esterno) confezionate singolarmente**  
Contains 10 packaged Covers for SlimWinch (external mounting)
4. **Contiene 10 Cover per SlimWinch (montaggio incassato) confezionate singolarmente**  
Contains 10 packaged Covers for SlimWinch (recessed mounting)
5. **Contiene 10 set ferramenta e cover attacco anta (montaggio esterno)**  
Contains 10 hardware sets and covers for door's connections (external mounting)
6. **Contiene 10 set ferramenta e cover attacco anta (montaggio incassato)**  
Contains 10 hardware sets and covers for door's connections (recessed mounting)

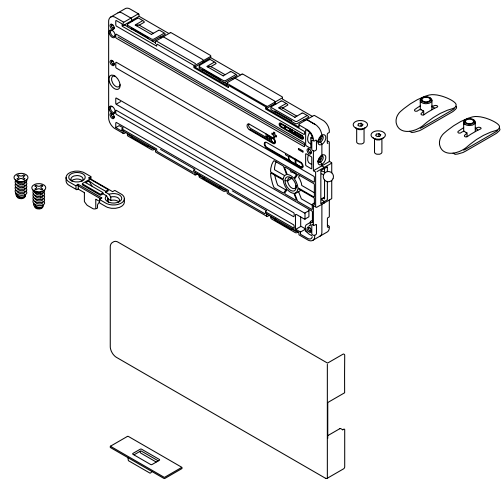
#### 表面安装带装饰盖

External mounting with cover



#### 内嵌安装带装饰盖

Recessed mounting with cover



#### 可选颜色 (RAL)

Cover's standard colors (RAL)



##### 信号白

Signal white  
RAL 9003



Grigio quarzo  
Quartz grey  
RAL 7039



##### 铁灰色

Iron grey  
RAL 7011



Grigio seta  
Silk grey  
RAL 7044



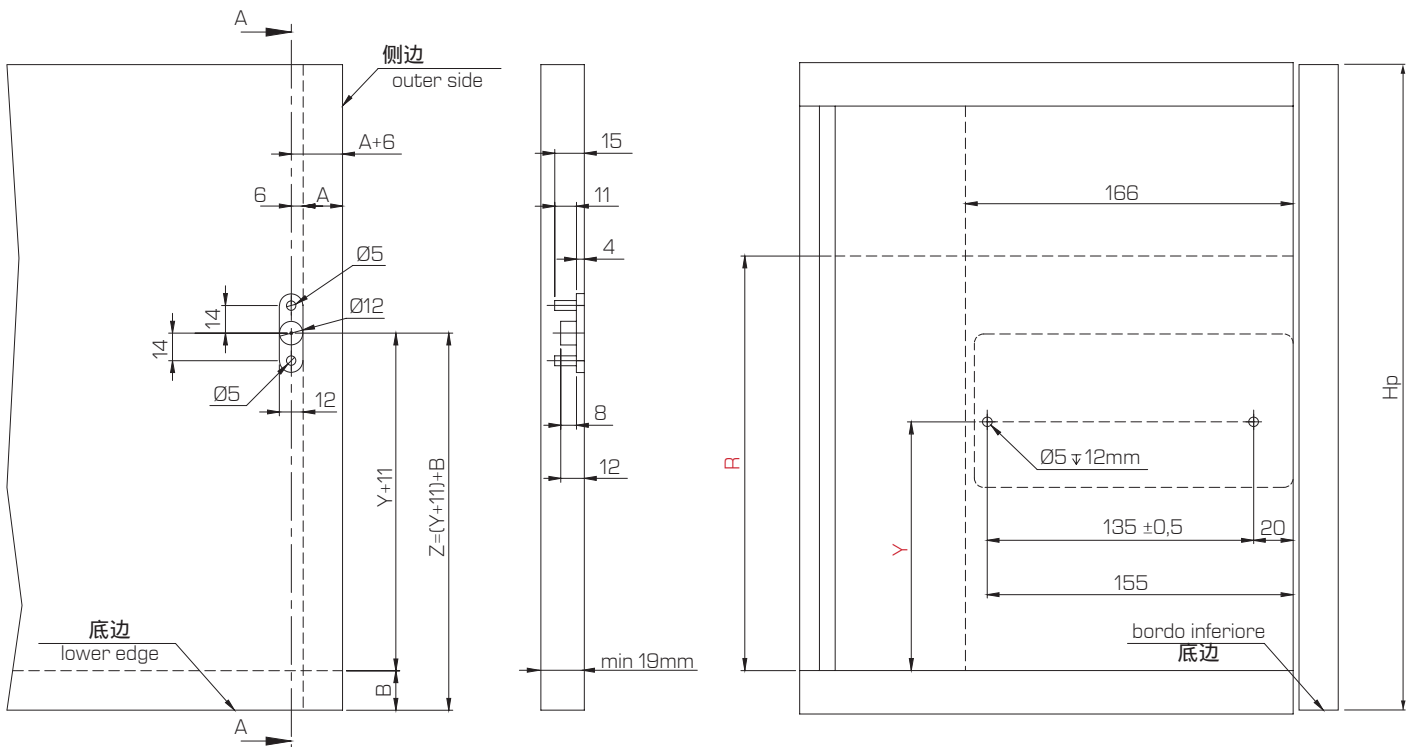
Marrone grigiastro  
Grey brown  
RAL 8019



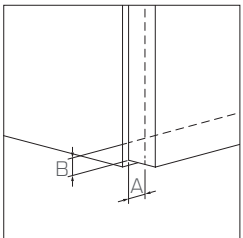
Nero traffico  
Traffic black  
RAL 9017

## 表面安装参数

External mounting workings

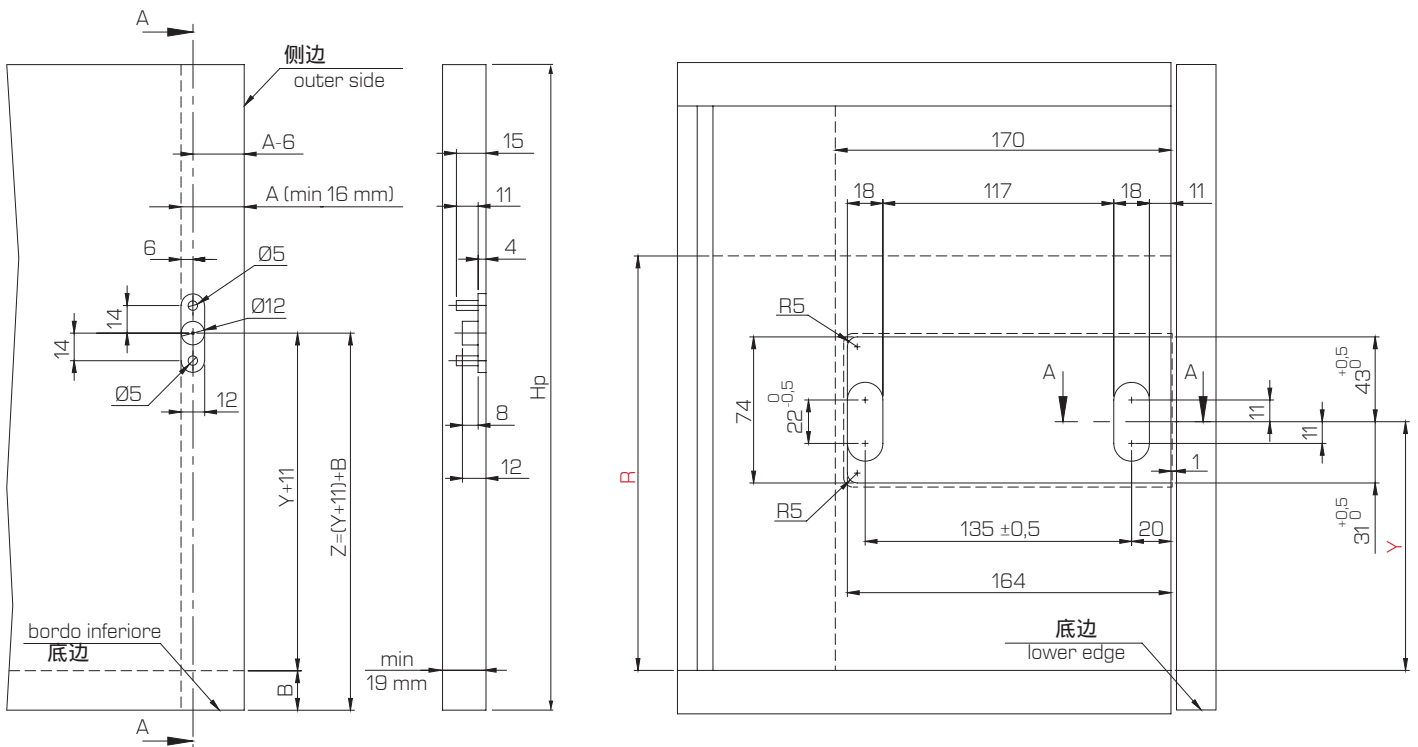


Hp	Y	R
200 - 330	126	176
330 - 430	150	200
430 - 480	160	210

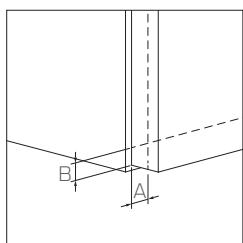
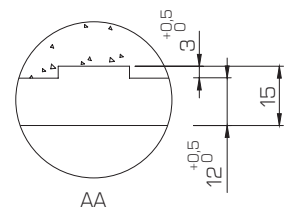


# 内嵌安装参数

Recessed mounting workings

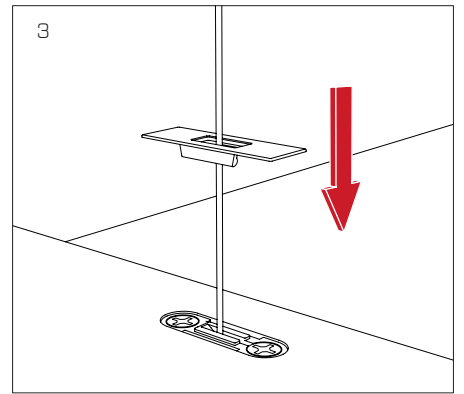
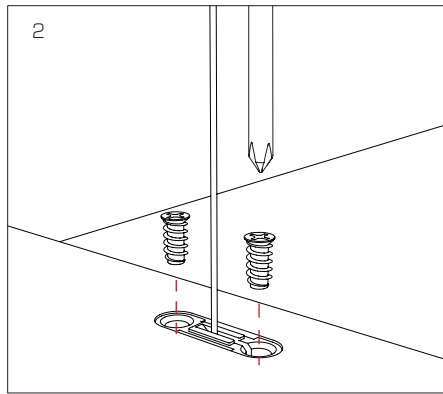
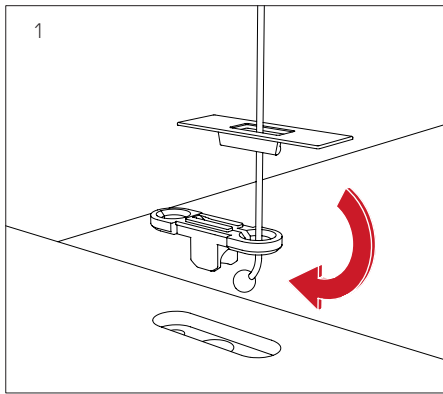


Hp	Y	R
200 - 330	126	176
330 - 430	150	200
430 - 480	160	210



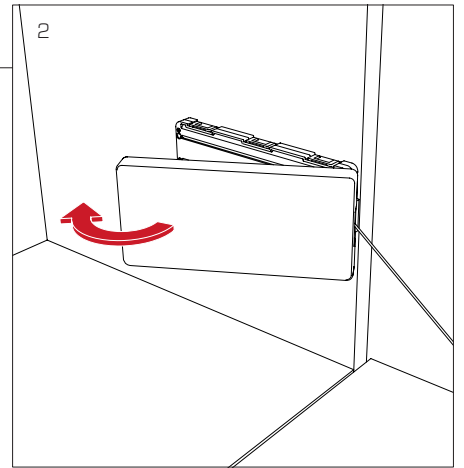
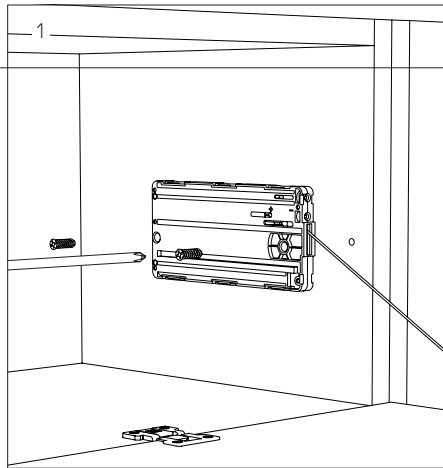
## 门板连接安装示意

Door's connection mounting



## 表面安装示意

Mechanism's external mounting



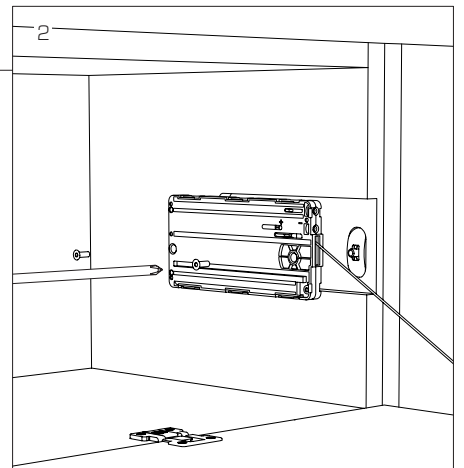
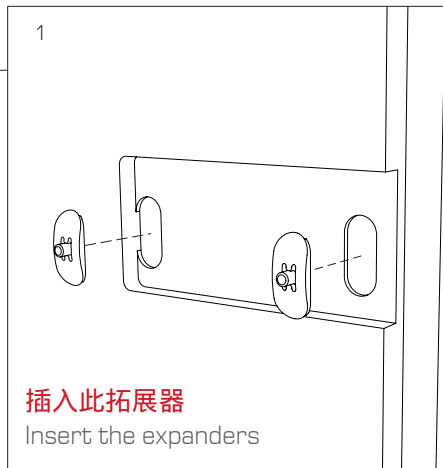
## 内嵌安装示意

Mechanism's recessed mounting



**注意 WARNING**

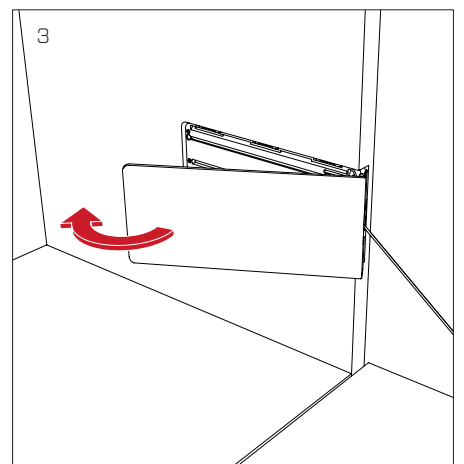
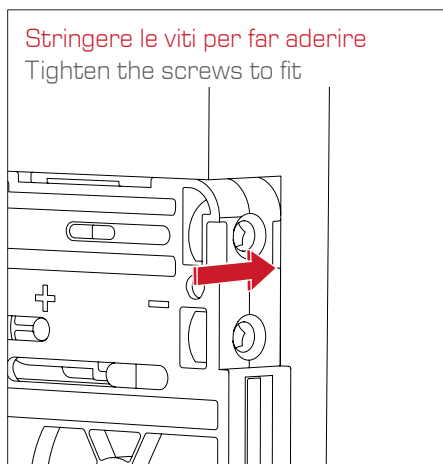
拓展器必须妥善安装于底部衬板上  
The expanders must be well lean on the bottom of the drilling.





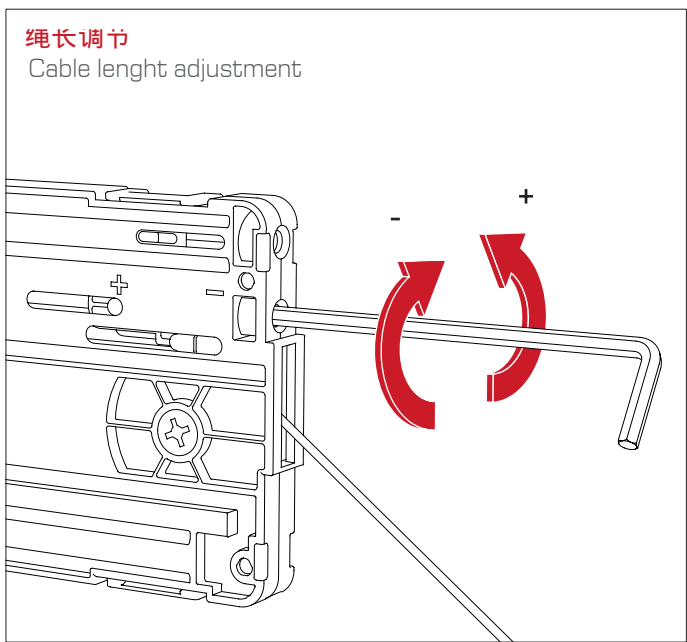
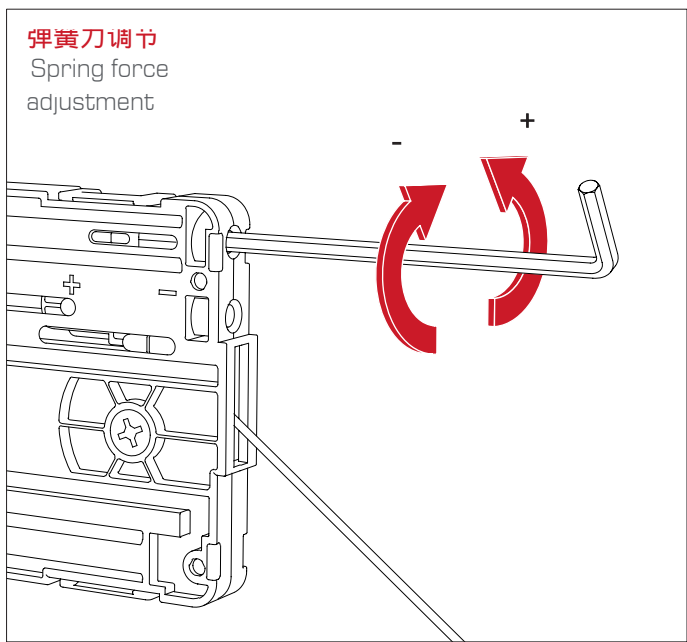
**注意 WARNING**

拧紧螺丝的同时，将SlimWinch卡在两个拓展器上  
While screwing, hold SlimWinch against the two expanders.



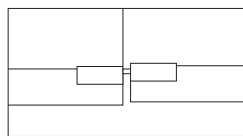
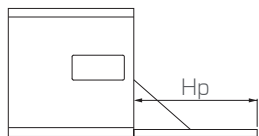
**调节 (内六角3 mm)**

Adjustments (3 mm Allen key)



**门板重量对照表 (kg)**

Door weight tables (kg)



Cerniera 1 perno  
Hinge 1 bolt

Hp	力级 4 Spring 4		力级 6 Spring 6		力级 10 Spring 10		力级 14 Spring 14		力级 16 Spring 16		力级 20 Spring 20	
	SLIMWINCH x1	SLIMWINCH x2	SLIMWINCH x1	SLIMWINCH x2	SLIMWINCH x1	SLIMWINCH x2	SLIMWINCH x1	SLIMWINCH x2	SLIMWINCH x1	SLIMWINCH x2	SLIMWINCH x1	SLIMWINCH x2
200 - 230	2,6 - 3,4	5,2 - 6,8	3,4 - 4,4	6,2 - 8,4	4,5 - 6,2	8,4 - 11,6	5,5 - 7,4	11,6 - 14,8	-	-	-	-
230 - 270	2,2 - 2,8	4,8 - 6	2,8 - 3,9	5,6 - 7,3	4 - 5,4	7,6 - 10,7	5,3 - 7,4	9,9 - 12,4	6,7 - 8,9	12,5 - 15,7	7,7 - 9,3	14 - 19,1
270 - 330	2,3 - 2,7	4,1 - 5,3	2,7 - 3,3	4,7 - 6,1	3,4 - 5,2	6,2 - 8,7	4,7 - 6,1	8,4 - 11	5,3 - 6,7	9,5 - 12,6	6,3 - 7,9	11,8 - 15
330 - 380	-	3,6 - 4,2	2,3 - 2,7	4 - 5,4	3 - 4,6	5,6 - 7,8	4 - 5,6	7,8 - 10,4	4 - 5,6	8 - 11,2	5,6 - 6,8	10,4 - 12,8
380 - 430	-	3,5 - 4,4	2,4 - 2,9	4,2 - 5,6	3,1 - 4,1	5,7 - 7,3	4,1 - 4,9	7,9 - 10,3	4 - 6	8 - 11,2	5,7 - 7,1	11,1 - 13,5
430 - 460	-	3 - 3,8	2 - 2,5	3,6 - 5,1	2,5 - 3,4	5,1 - 7,2	3,9 - 5,2	7,2 - 8,7	4 - 6,1	7,8 - 10,3	5,3 - 6,2	10,2 - 12
460 - 480	-	3,3 - 3,9	1,8 - 2,6	3,9 - 4,9	2,7 - 3,2	5 - 7,1	3,6 - 4,4	7 - 8,6	4 - 5,5	7,5 - 9,8	5,3 - 6,2	9,8 - 13



**ATTENZIONE WARNING**

Il peso e la posizione della maniglia possono influenzare le prestazioni del meccanismo.  
The weight and the position of the handle may influence the performance of the mechanism.

Hinge For Vertical-opening Fronts

**IDEA** is the brand new hinge for upward and downward-opening doors manufactured by Perin Spa. Featuring a special mechanism which can accommodate different thickness doors within the one composition, it also makes it possible to reduce the gap between one door and the next to a minimum of 1,5mm.

- Drilling required:  $\Phi 26\text{mm}$
- Door thickness: 18~20mm
- Opening:  $90^\circ$

1

- 開合有制， $90^\circ$
- 開孔直徑  $\Phi 26\text{mm}$
- 門板厚度：18~20mm

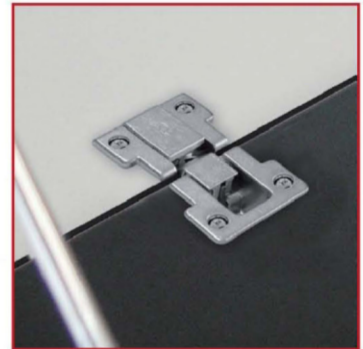
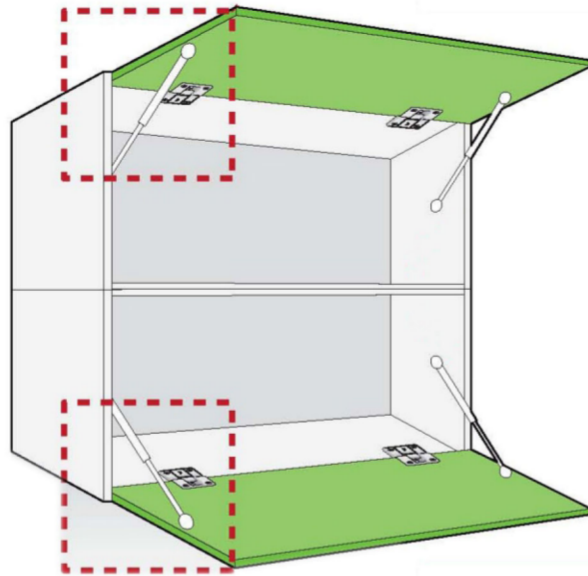
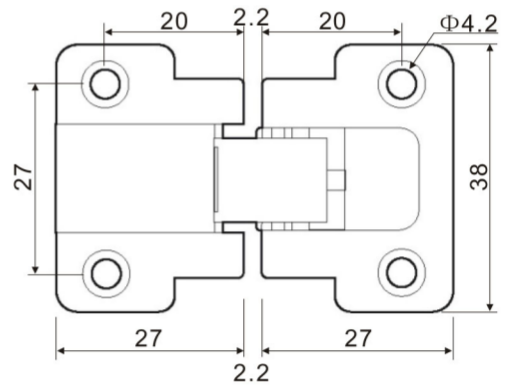


DIAGRAM OF DIMENSIONS

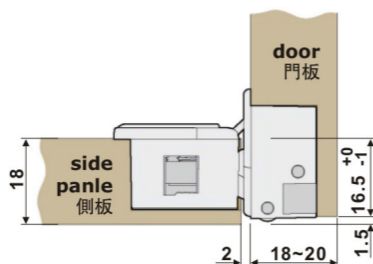
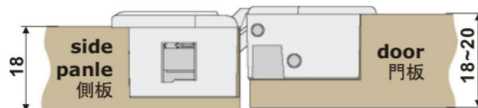
配件參數圖



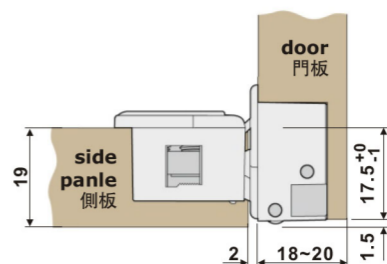
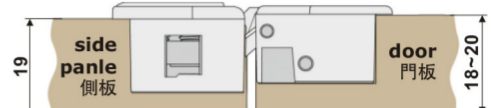
SCH-356\_

品名：意大利 DANCO 平面暗較  
 規格：A(蓋16.5mm)、B(蓋17.5mm)  
 材料：鋅合金  
 顏色：鍍鋅  
 產地：意大利  
 包裝：200個/盒

SCH-356A



SCH-356B

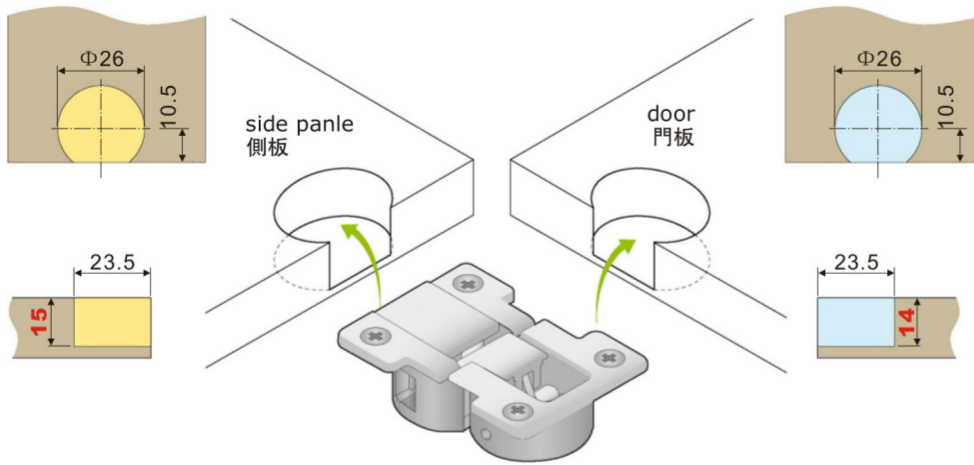




Hinge For Vertical-opening Fronts

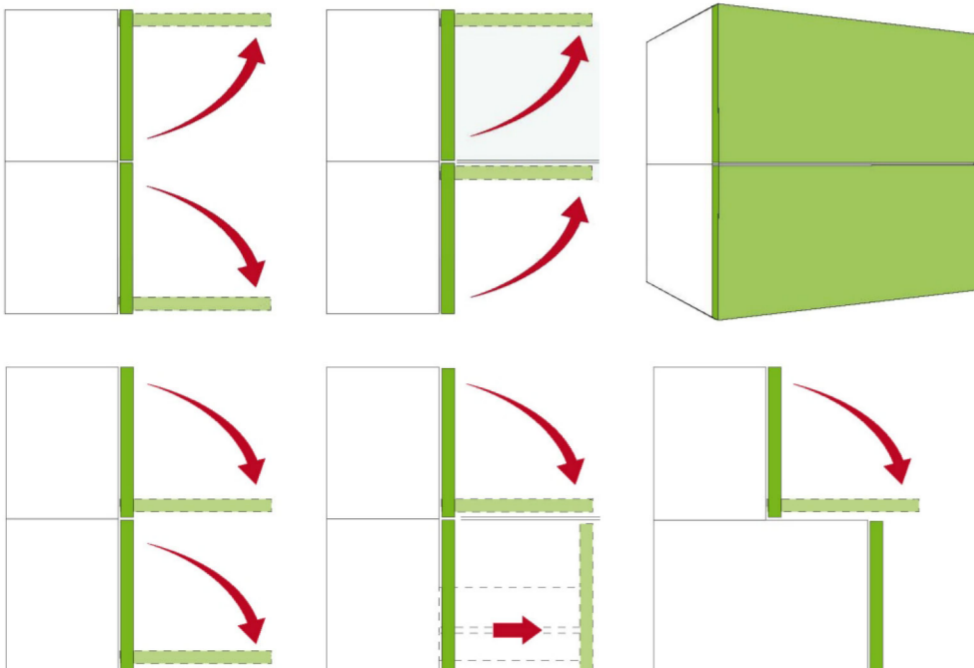
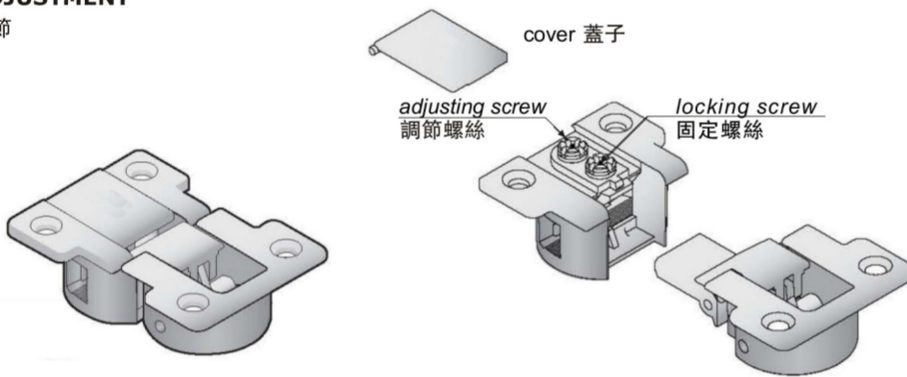
DIAGRAM OF DIMENSIONS

配件參數圖



ADJUSTMENT

調節



1