

PIVOT HINGE "HODOR" F/8-12 MM DOORS

- high quality furniture fittings



Application:
 Pivot hinge for inset doors. Top & bottom hinge.
 With catch function. Drilling required.
 Angle adjustment by use of sloping gaskets.
 160 degrees opening.

Cabinet panel thickness from 10mm.

Material: Aluminum – chrome pl. or black matt
 Size: 45 x 85 x 43 mm (W/L/H)
 Door thickness: 8 – 12 mm
 Drilling: Ø 12 mm
 Max load capacity: 38 kg per door.
 Max. door size: 600 x 2000 x 12mm (W/H/T)

1 pair = 1 top + 1 bottom hinge

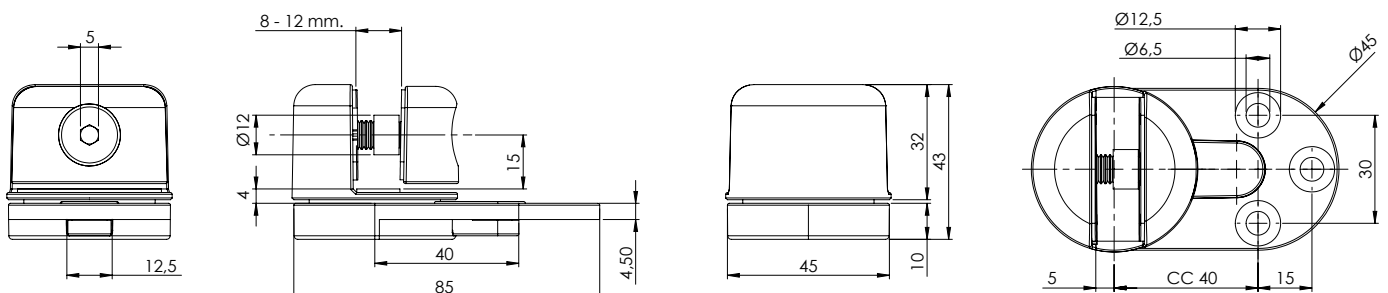
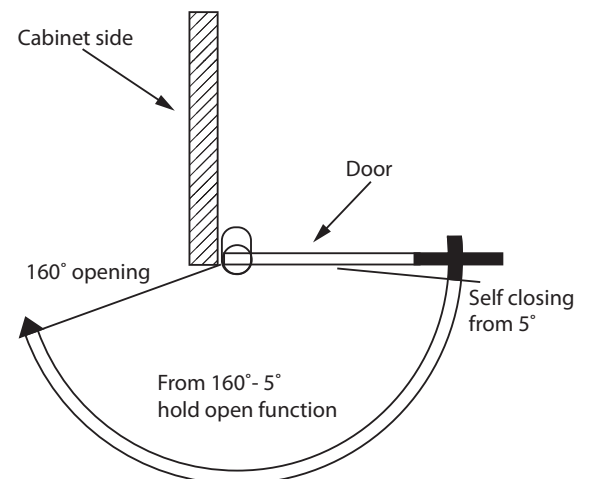
Item No.:

Chrome plated	# 15.06.080
Black matt	# 15.06.082

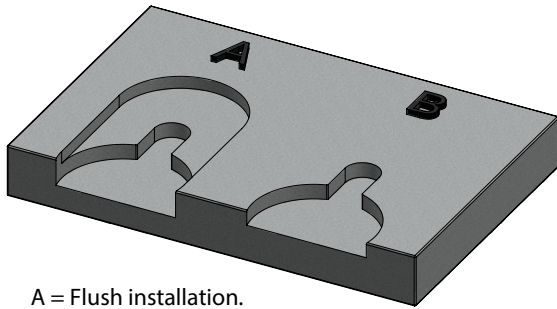
Incl. 6 CSK steel screws Ø6 x 18 mm, 4 transparent PVC gaskets in 1mm & 2 black PA sloping gaskets for angle adjustment.



TÜV Approved
 EN 15570:2008
 80.000 Cycles

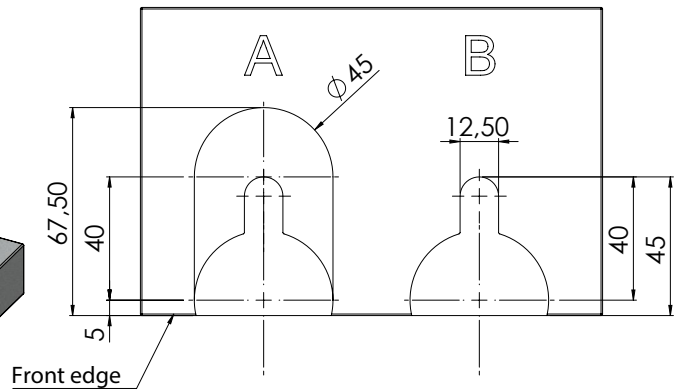
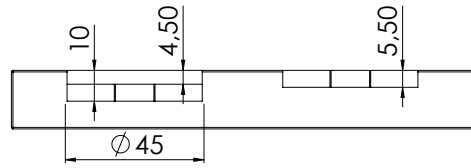
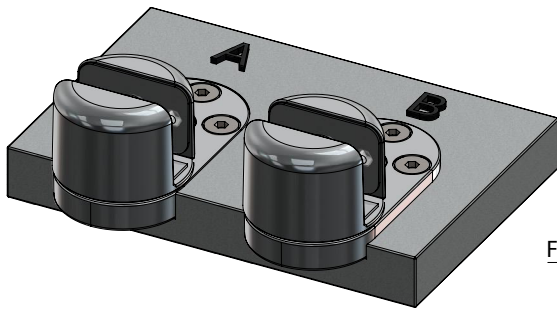


PIVOT HINGE "HODOR" INSTALLATION

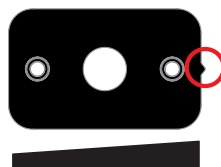
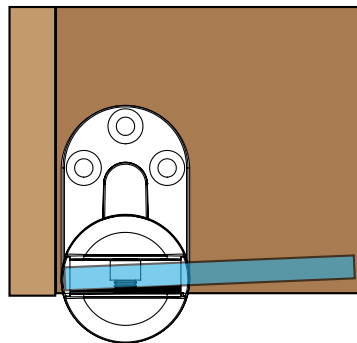
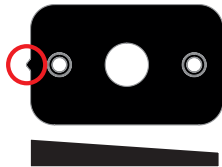
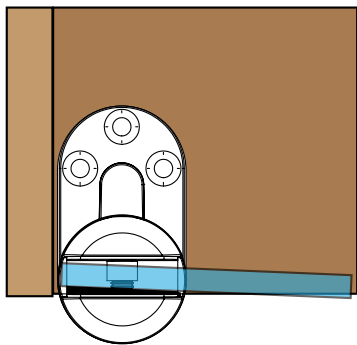


A = Flush installation.

B = Elevated installation 4,5mm.

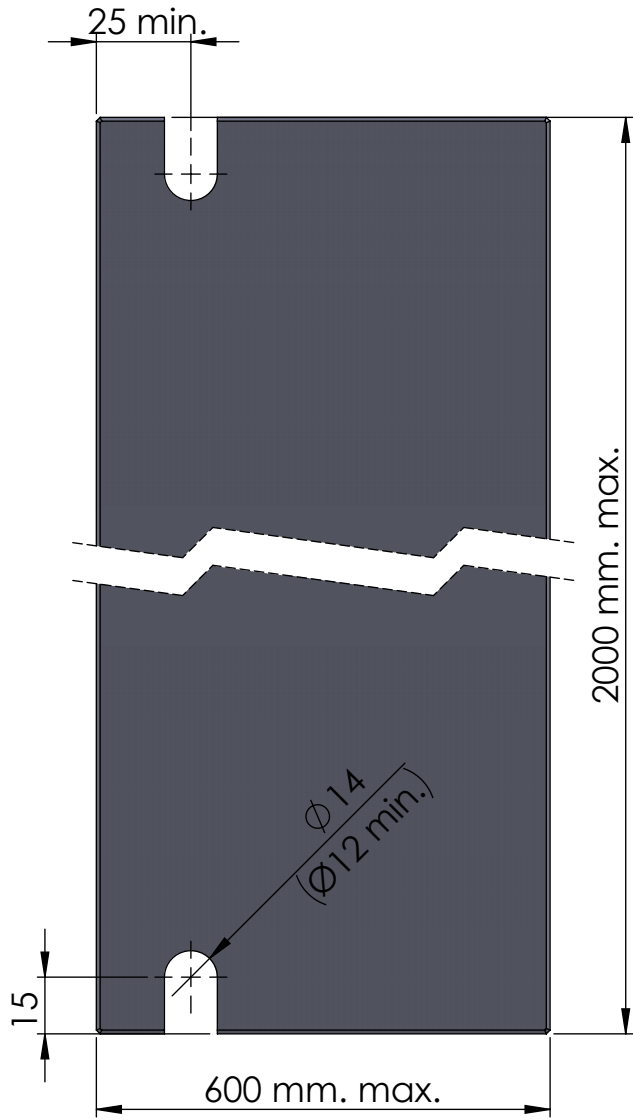


Angle adjustment by use of sloping gaskets.

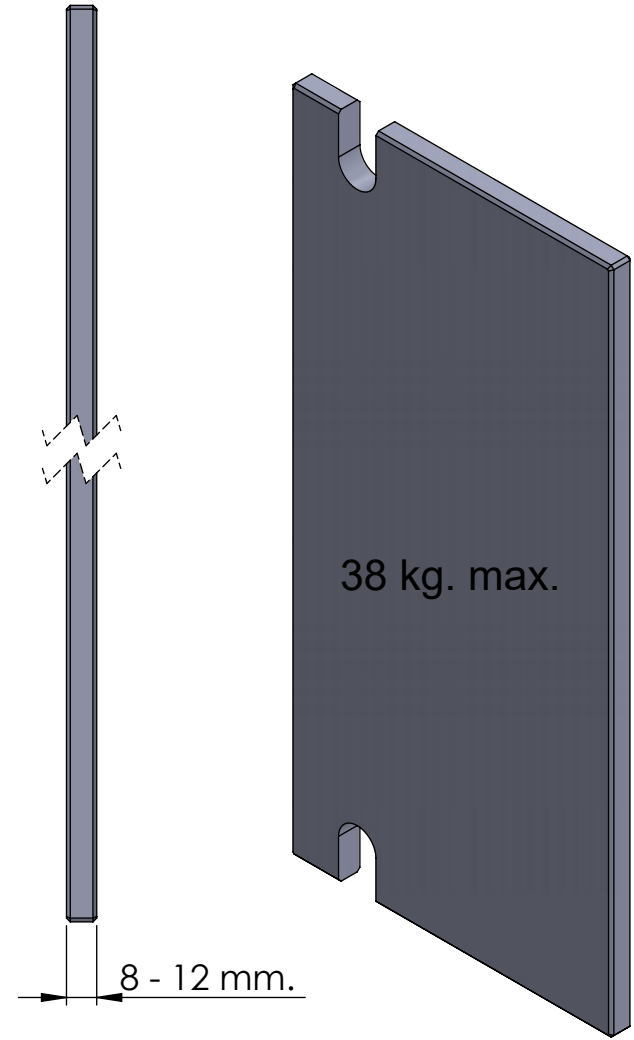
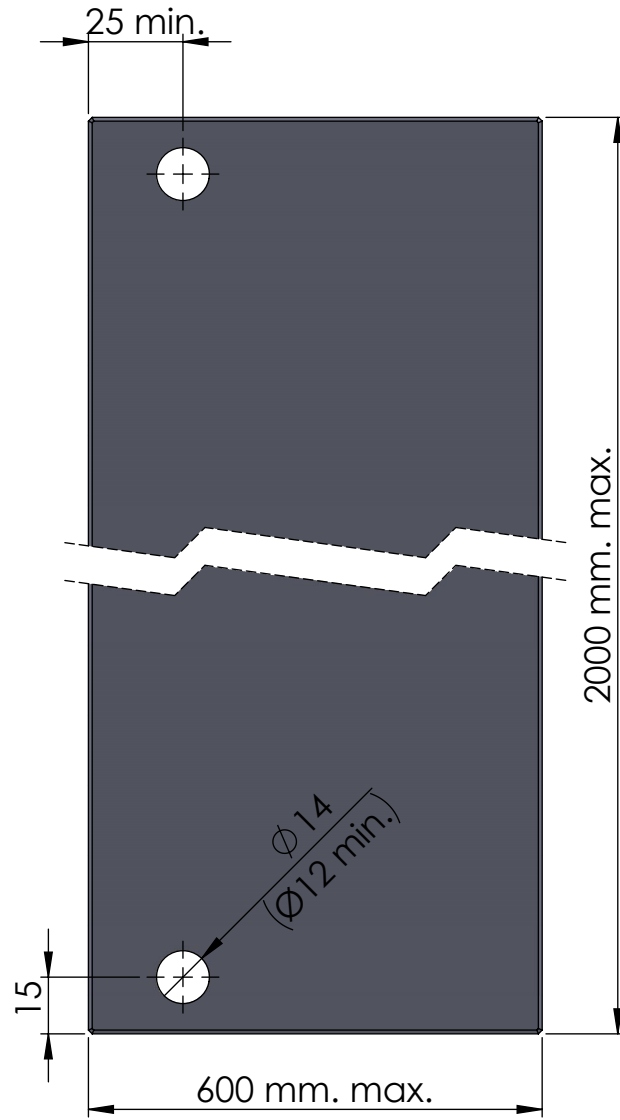


SISO A/S

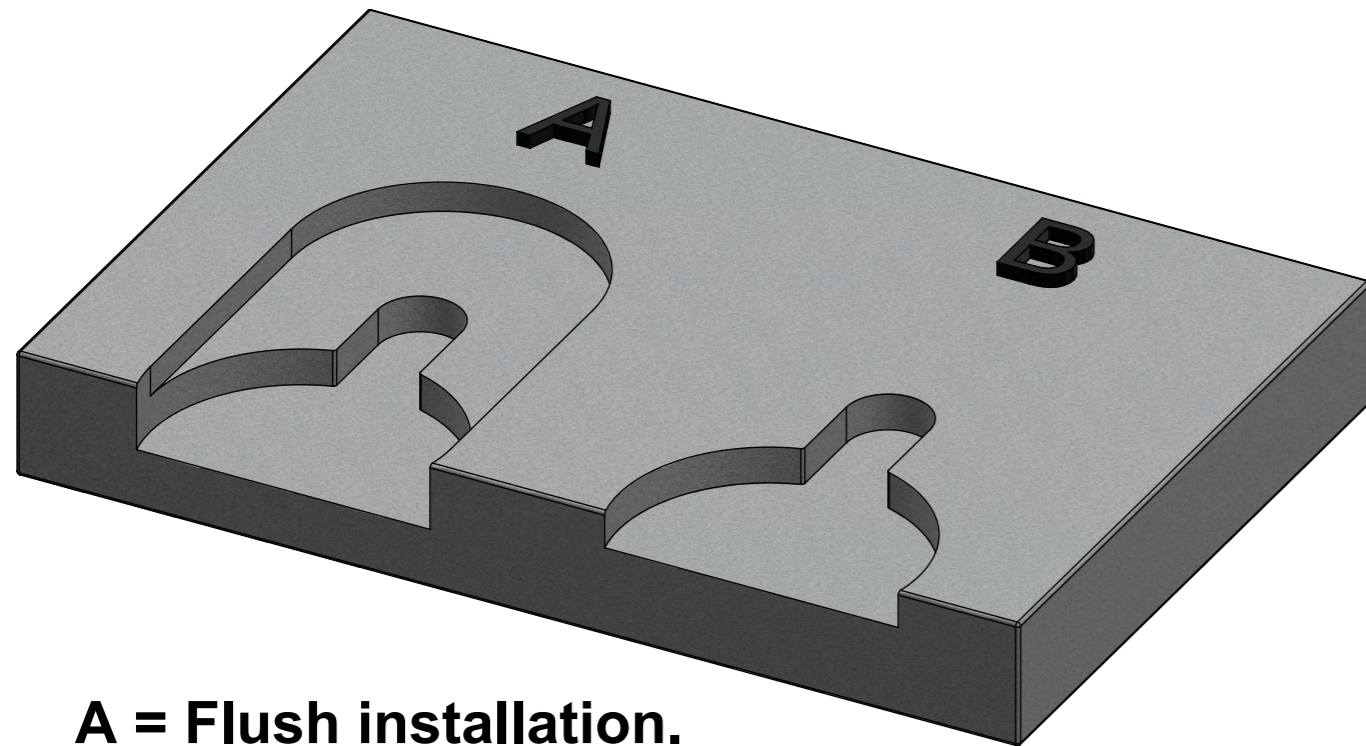
Option A



Option B

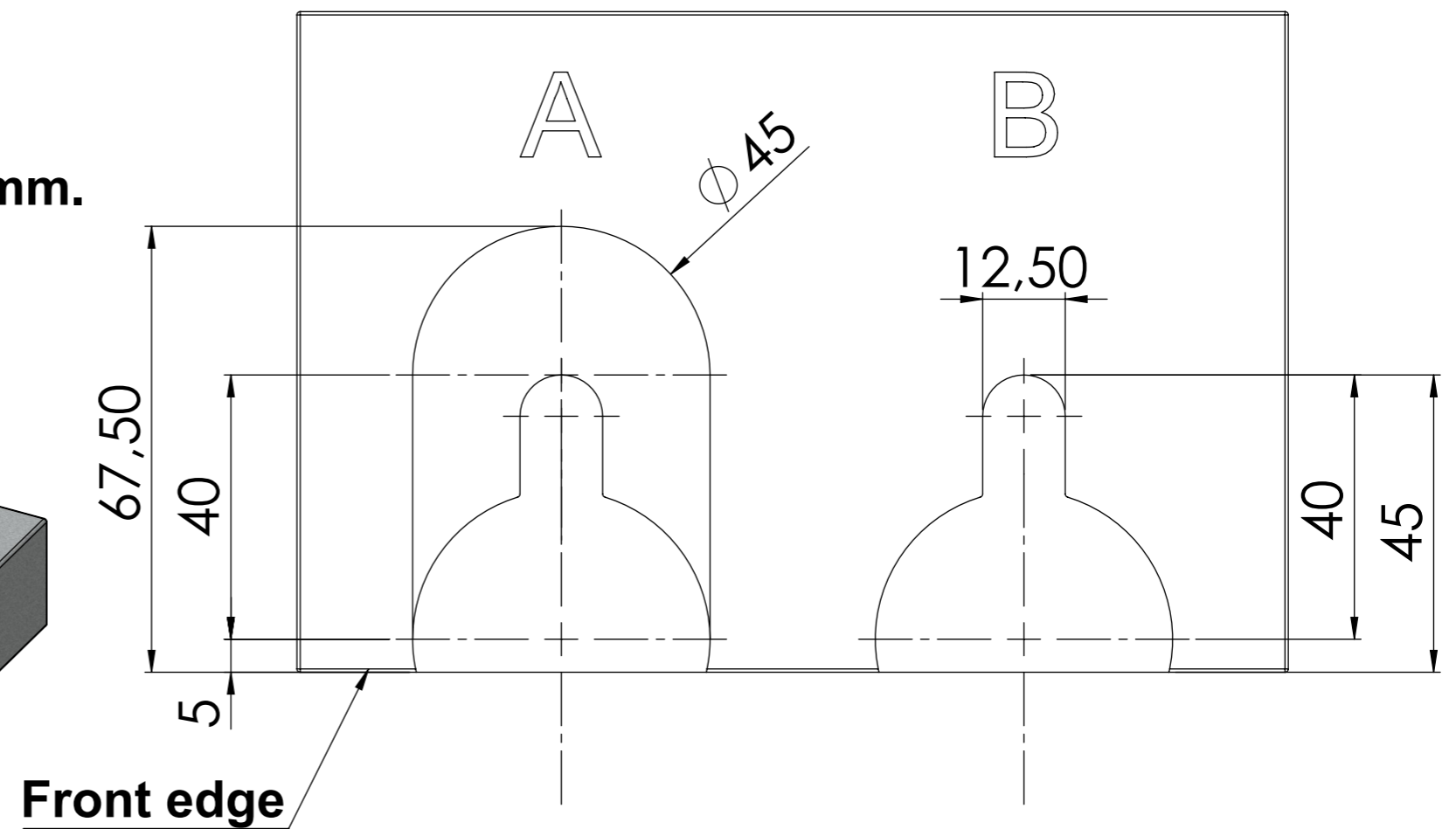
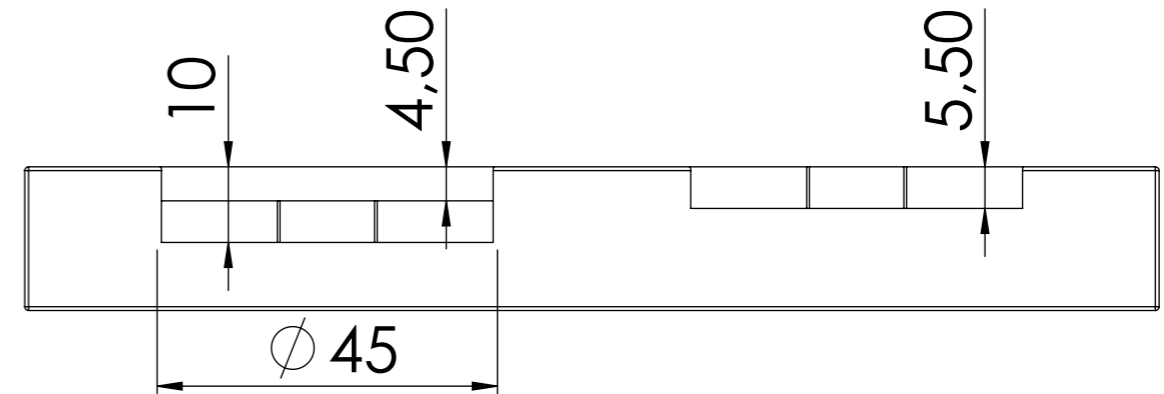
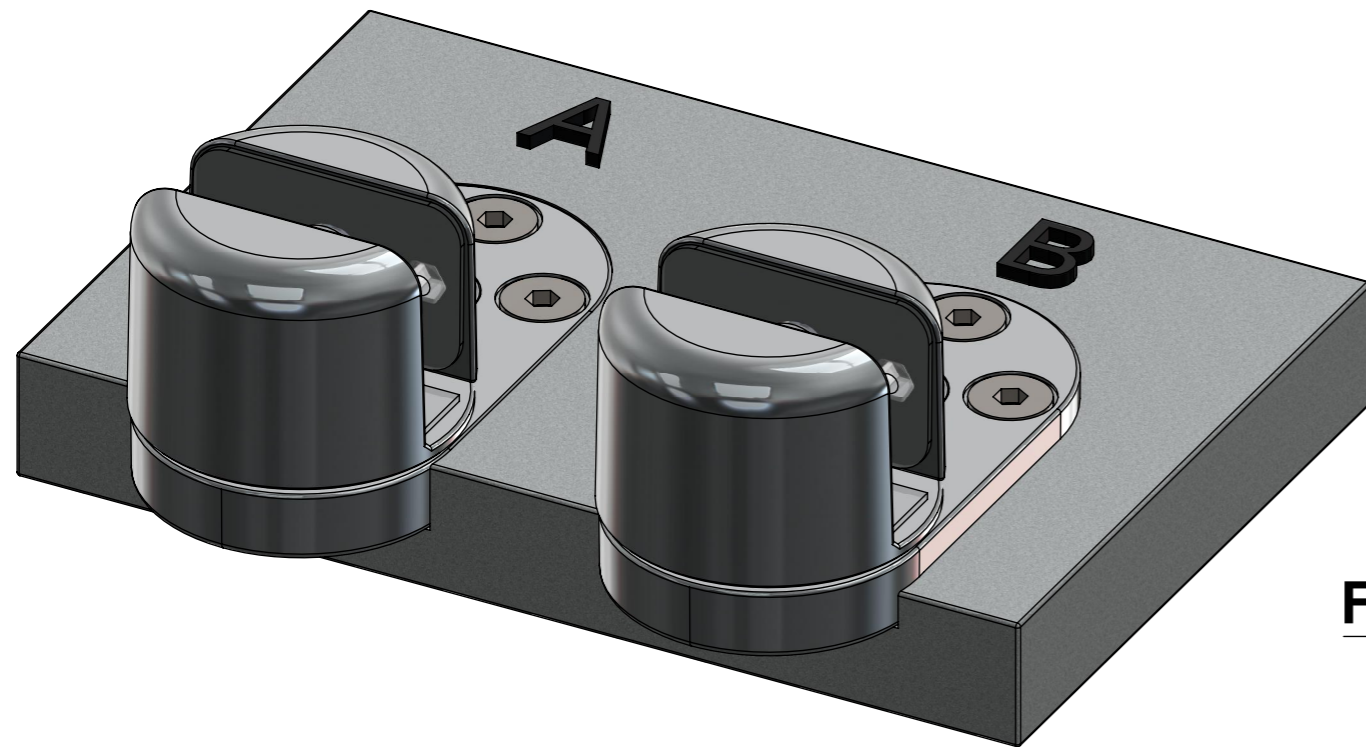


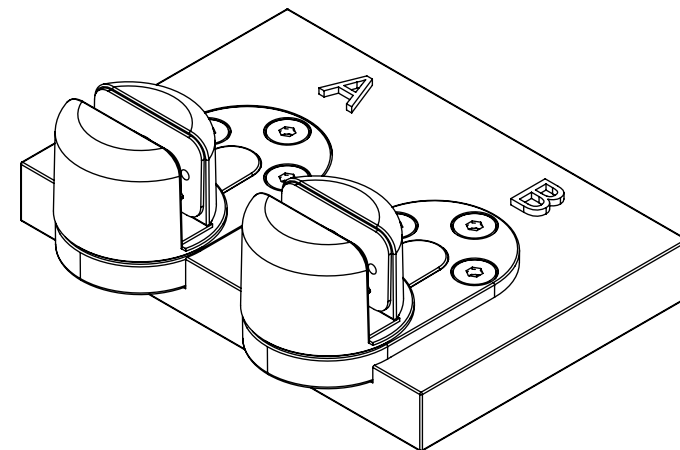
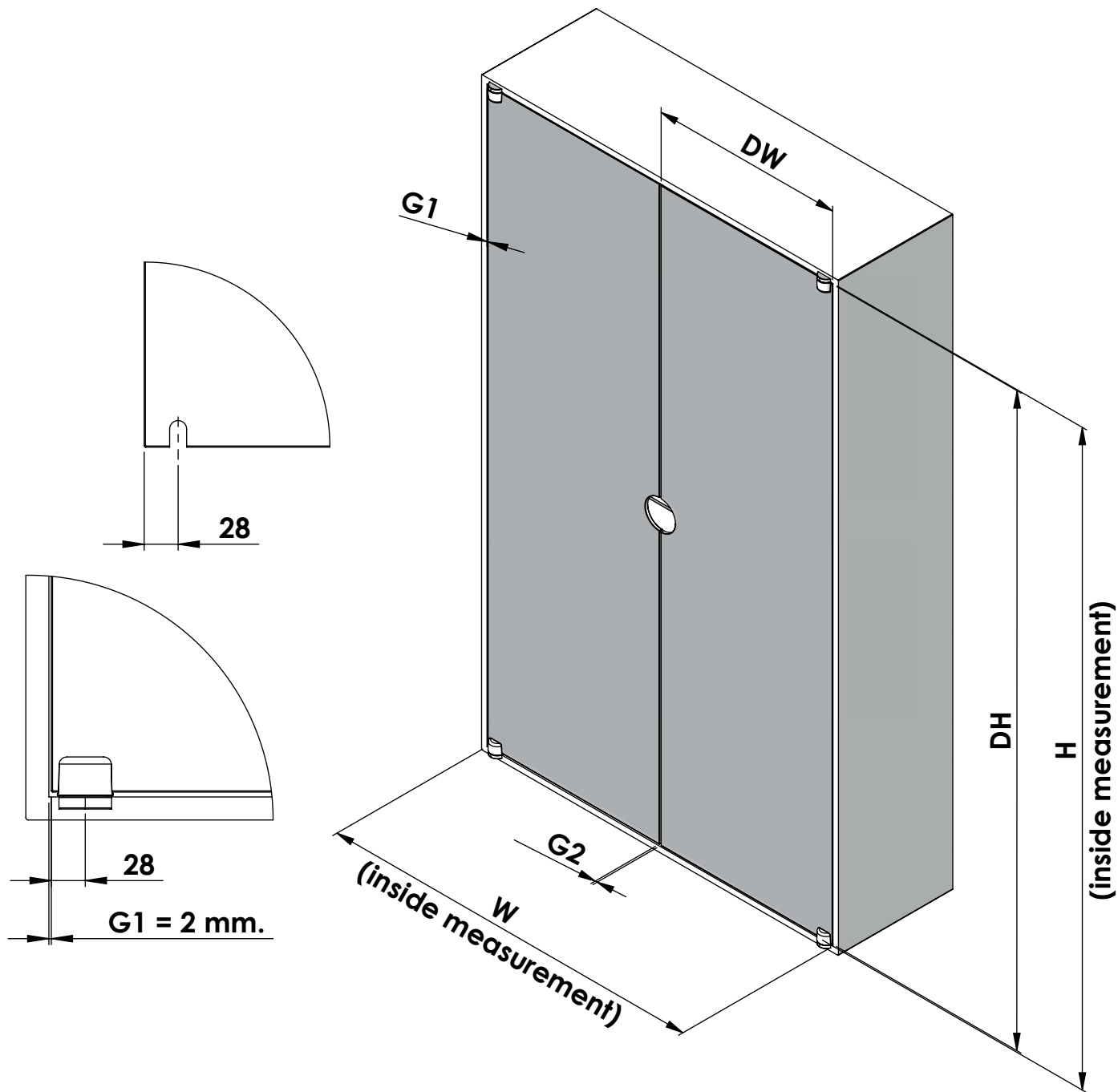
**For door installation as "insert" setup.
(Door front is flush with the front edge)**



A = Flush installation.

B = Elevated installation 4,5mm.





**DH - Door Height
by "A" Flush hinge installation:**

$H - 9 \text{ mm.} = DHa$

**DH - Door Height
by "B" elevated hinge installation:**

$H - 18 \text{ mm.} = DHb$

**DW - Door width
by single door:**

$W - G1 - G2 = DWs$

**DW - Door width
by double door:**

$W - (G1 \times 2) - G2 = DW \times 0,5 = DWd$